



Research Laboratories, Inc.

## Crypto Lock CC-8521AN Single Door Access Control System

- 3, 4 or 5 digit PIN
- Compatible with large, heavy-duty electric locks
- Automatic battery charger and low-battery warning
- Weather proof stainless steel keypad with spy-proof shield
- Meets Mil-S-901D Grade A shock requirements

Crypto-Lock is a versatile, easily installed and operated single door access control system. It provides reliable keypad access control using a single 3, 4 or 5-digit PIN code.

The unit includes a built-in 12Vdc and 24Vdc, 2A power supply to power electric strikes and magnetic locks, eliminating the need for separate power supply units. It provides the high in-rush currents required to reliably open heavy duty locking devices such as Von Duprin\* rim latch retraction units and Sargent & Greenleaf Brute\* electric locks. Continuous activation of large solenoid-operated locks is possible by a unique, switch selectable current limiter. After the lock has opened this feature limits the current to a value that will reliably hold the lock open without damaging the solenoid.

The power supply includes a battery charger and monitoring circuit that automatically maintains external batteries in a fully charged condition and activates audible and visual warnings when the charge level is low. Two 12V, 7AH sealed lead acid batteries are normally used, although similar batteries with other AH capacities can also be used.

The CC-8521A is mounted on resilient shock isolators and has been tested to demonstrate compliance with Mil-S-906D, Grade A.



The stainless steel keypad includes a green LED that illuminates when the door is released. A visitor button on the keypad activates an internal 95 dB annunciator and also generates an output voltage for an external device.

Installation and set-up are readily accomplished using the wiring diagram affixed inside the enclosure door and clearly labeled terminals and controls. Slide switches set the PIN length (3, 4 or 5 digits), output voltage (12 or 24 Vdc), and enable holding current limiting. Five 10-position DIP switches are used to set the PIN. The open duration time and penalty time are set by analog control knobs.

The CC-8521AN can be wired to operate on either 115 or 230 Vac, 50-60 Hz .

\*Van Duprin is a registered trademark of the Ingersoll-Rand Company, Brute is a registered trademark of Sargent & Greeleaf, Inc.

### MONITEQ RESEARCH LABS, INC.

700 N. Fairfax St., Alexandria, VA 22314 USA \* Tel: 1-703-549-1122, 1-800-989-9891 \* Fax 1-00703-549-1090  
e-mail: info@moniteq.com

### Specifications

**Power required:** 115/230 Vac, 50 or 60 Hz, 60W

**Output:** 12 or 24 Vdc, 2A continuous

**Holding Current:** Can be limited to 300mA (switch selectable)

**In-rush capacity:** Up to 16 A

**Relay contacts:** 10A, SPDT

**Battery back-up:** 12Vdc or 24Vdc, automatic transfer and charging (batteries optional)

**Battery monitoring:** Warning lamp, and beeper activate when batteries are low

**PIN code length:** 3, 4 or 5 digits, switch selectable

**Open duration:** Adjustable, 3 to 60 seconds  
**Penalty function:** Invalid digits temporarily disable operation

**Penalty time:** Adjustable, 3 to 60 seconds

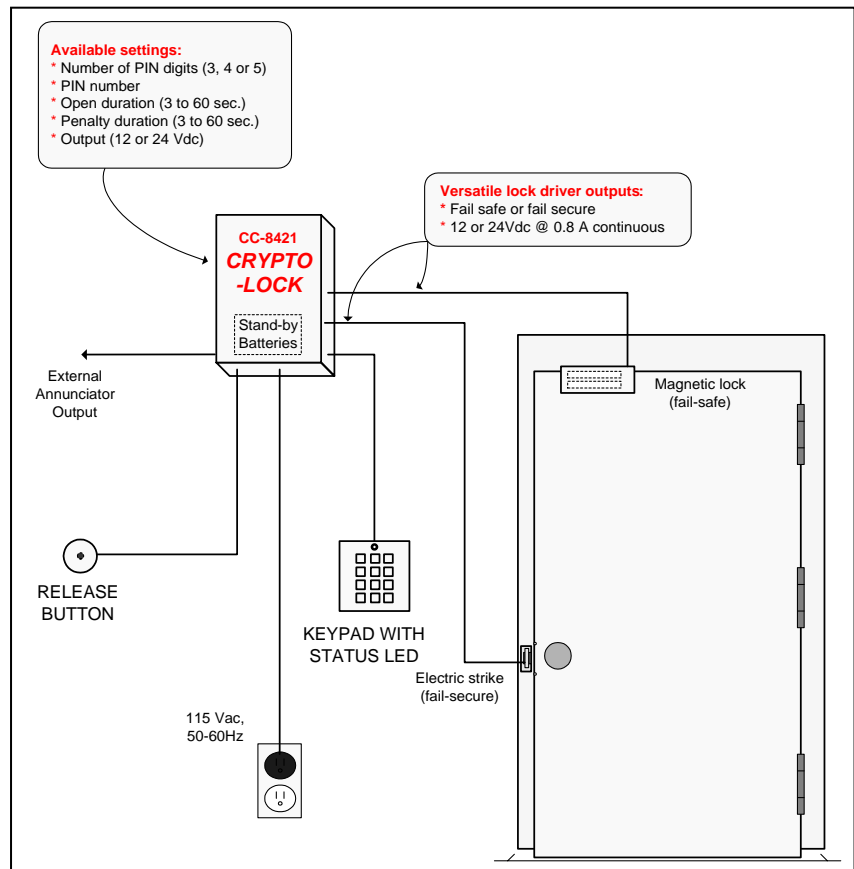
**Remote release:** Dry contact closure input (SPST push-button switch supplied)

**Keypad cable:** 20 ft. long, 14-conductor, #22, Over-shielded, water-blocking, max. length 200 ft.

**Annunciator cable:** 2-conductor, #22

**Enclosure:** 16 gauge steel, powder painted, gray color, cam-lock and holes for padlock

**Dimensions:** 9.5H x 9W x 4.5D in.



**Ordering Information (Part Number: Description)** CC-8521AN: Crypto-Lock single door access control system including control unit, weather proof 10-button keypad in stainless steel spy-proof housing with visitor button and 10 ft. water-blocking, over-shielded cable, equipped with resilient shock isolation mounts to meets Mil-S-906D Grade A shock requirements, user code cannot be re-programmed, changed or revealed in any way from keypad. Control panel includes penalty time adjustment (3-60 sec.), open time adjustment (3-60 Sec.), code length switch (3, 4 or 5 digits), five 10-position DIP switches set the PIN code, output voltage 12 or 24 Vdc (switch selectable), 2A continuous, 16A in-rush current, holding current limit switch (2A or 300mA), fail-safe and fail-secure lock outputs, visitor annunciator and output voltage, low battery warning lamp, beeper and output signal, 16 gauge metal enclosure with cam lock and holes for padlock, input power 115/230 Vac, 50-60Hz. Supplied with instruction manual, mounting hardware and remote release push-button switch.

### Options and Accessories

CC-BATT                      12Vdc rechargeable battery (order two for 24Vdc operation)