



# MONITEQ, Inc.

## MODEL CC-8521A SINGLE DOOR ACCESS CONTROL SYSTEM

- 3, 4 or 5 digit PIN
- Compatible with large, heavy-duty "Brute" electric locks
- Automatic battery charger and low-battery warning
- Weather-proof stainless steel keypad with spy-proof shield
- PIN security and door monitoring and control functions
- All inputs/outputs surge protected



Crypto-Lock is a versatile, easily installed and operated single door access control system capable of operating virtually any electric or magnetic lock. Its microcontroller based design provides a high level of PIN security and comprehensive door monitoring functions.

The unit includes a built-in 12Vdc and 24Vdc, 4A power supply to power electric strikes and magnetic locks, eliminating the need for separate power supply units. It provides the high in-rush currents required to reliably open heavy-duty locking devices such as Von Duprin\* rim latch retraction units and Sargent & Greenleaf Brute\* electric locks. Continuous activation of large solenoid-operated locks is possible by a unique, switch selectable current limiter. After the lock has opened, this feature limits the current to a value that will reliably hold the lock open without damaging the solenoid.

The power supply includes a battery charger and monitoring circuit that automatically maintains external batteries in a fully charged condition and activates audible and visual warnings when the

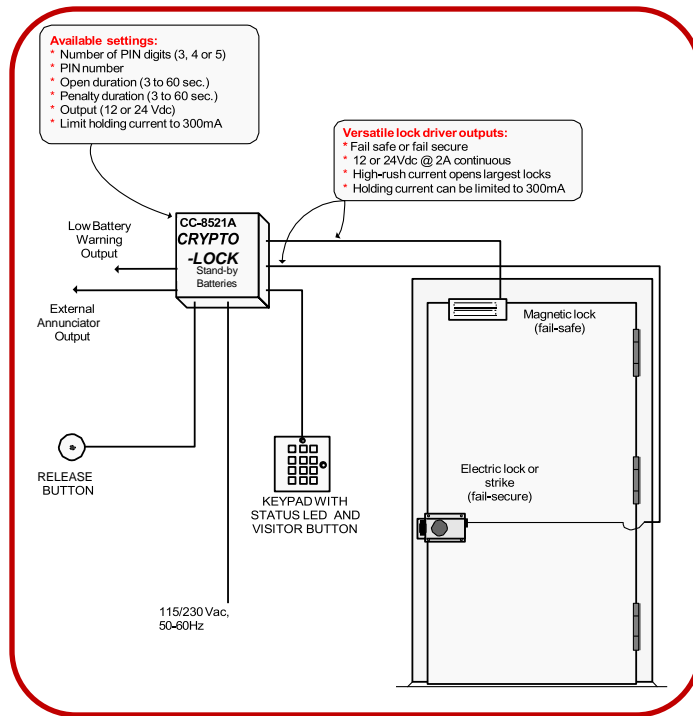
charge level is low. Two 12V, 7AH sealed lead acid batteries can be housed in the enclosure.

The stainless steel keypad includes a green LED that illuminates when the door is released. A visitor button on the keypad activates an internal annunciator and also generates an output voltage for an external device. Effective door monitoring and control is provided by an anti-follow through feature and by door propped and forced door alarms. User code cannot be re-programmed, changed or revealed in any way from the keypad.

Installation and set-up are readily accomplished using the wiring diagram affixed inside the enclosure door and clearly labeled terminals and controls. Slide switches set the PIN length (3, 4 or 5 digits), output voltage (12 or 24 Vdc), and enable holding current limiting. Five 10-position DIP switches are used to set the PIN. The open duration time and penalty time are set by analog control knobs. The CC-8521A can be wired to operate on either 115 or 230 Vac, 50-60 Hz.

\*Von Duprin is a registered trademark of the Ingersoll-Rand Company; Brute is a registered trademark of Sargent & Greenleaf, Inc.

## Diagram



## Specifications

**Power Required:** 115/230 Vac, 50 or 60 Hz, 60W

**Output:** 12 or 24 Vdc, 4A continuous

**Holding Current:** Can be limited to 300mA (switch selectable)

**In-rush Capacity:** Up to 16A

**Relay Contacts:** 10A, SPDT

**Battery Back-up:** 12 or 24 Vdc, automatic transfer and charging (batteries optional)

**Battery Monitoring:** Warning lamp and beep activate when batteries are low

**PIN Code Length:** 3, 4 or 5 digit, switch selectable

**Open Duration:** Adjustable, 3 to 60 seconds

**Penalty Function:** Invalid digits temporarily disable operation

**Penalty Time:** Adjustable, 3 to 60 seconds

**Remote Release:** Dry contact closure input

**Keypad Cable:** 15 ft. long, 14-conductor, #22, max. length 200 ft.

**Enclosure:** 19 gauge steel, powder painted, gray, cam-lock and holes for padlock

**Dimensions:** 12"H x 9"W x 4.5"D

## Ordering Information

**Part Number:** CC-8521A

**Description:** Crypto-Lock single door access control system including control unit, weather-proof 10-button keypad in stainless steel spy-proof housing with visitor button and 15 ft. cable. Supplied with instruction manual and mounting hardware.

## Options and Accessories

CC-BATT 12Vdc rechargeable battery (order two for 24Vdc operation)

CC-BRUTE Heavy-duty surface mount electric lock

