



MONITEQ, Inc.

MODEL CC-8521BN SINGLE DOOR ACCESS CONTROL SYSTEM

- 3, 4, 5 or 6 digit PIN
- Compatible with large, heavy-duty "Brute" electric locks
- Automatic battery charger and low-battery warning
- Weather-proof stainless steel keypad with spy-proof shield
- PIN security and door monitoring and control functions
- All inputs/outputs surge protected



Crypto-Lock is a versatile, easily installed and operated single door access control system capable of operating virtually any electric or magnetic lock. Its microcontroller based design provides a high level of PIN security and comprehensive door control and monitoring functions.

The unit includes a built-in 12Vdc and 24Vdc, 2A power supply to power electric strikes and magnetic locks, eliminating the need for separate power supply units. The power supply provides the high in-rush currents required to reliably open heavy-duty locking devices such as Von Duprin* rim latch retraction units and Sargent & Greenleaf Brute* electric locks. Continuous activation of large solenoid-operated locks is possible by a unique, switch selectable current limiter. After the lock has opened, this feature limits the current to a value that will reliably hold the lock open without damaging the solenoid.

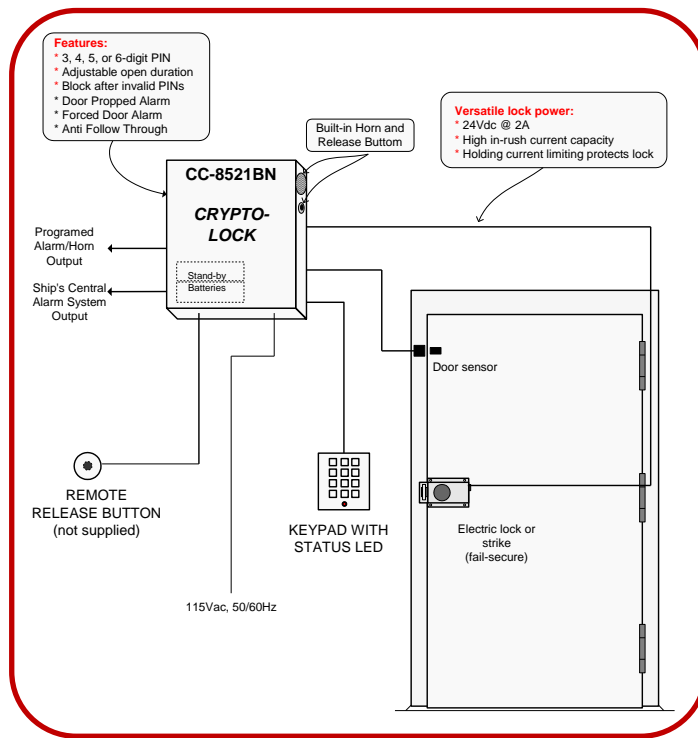
The power supply includes a battery charger and monitoring circuit that automatically maintains batteries in a fully charged condition and activates audible and visual warnings when the charge level is low. Two 12V, 7AH sealed lead acid batteries can be housed in the enclosure.

The stainless steel keypad includes a green LED that illuminates when the door is released. A visitor button on the keypad activates an internal annunciator and also generates an output voltage for an external device. A high level of security is provided by using up to six PIN digits and by unique features that protect against random number attacks. Effective door monitoring and control is provided by an anti-follow through feature and by door propped and forced door alarms. User code cannot be re-programmed, changed or revealed in any way from the keypad.

Installation and set-up are readily accomplished using the wiring diagram and programming guide affixed inside the enclosure door. Slide switches set the AC input voltage (115 or 230 Vac), output voltage (12 or 24 Vdc), and enable holding current limiting. The valid PIN and all door monitoring and control functions are set within a programming mode that can only be activated by authorized personnel with access to the control unit.

*Von Duprin is a registered trademark of the Ingersoll-Rand Company; Brute is a registered trademark of Sargent & Greenleaf, Inc.

Diagram



Specifications

Power Required: 115/230 Vac, 60 Hz, 25W

Output: 24 Vdc, 2A continuous

In-rush Capacity: Up to 16A

Relay Contacts: 10A, SPDT (Form C)

Battery Back-up: 24 Vdc, automatic transfer and charging (batteries optional)

Battery Monitoring: Warning lamp and beep activate when batteries are low

PIN Code Length: 3, 4, 5 or 6 digit

Open Duration: Adjustable, 3 to 60 seconds

Penalty Function: Invalid digits temporarily disable operation

Penalty Time: Adjustable, 3 to 60 seconds, defaults to 60 seconds after fifth invalid PIN

Door Monitoring Functions: Anti-follow through and door propped and forced door alarms

Remote Release: Dry contact closure

Keypad Cable: 20 ft. long, 8-conductor, #24, max. length 200 ft.

Enclosure: aluminum, powder painted, gray, knock-outs for conduit, cam-lock and holes for padlock, mounting bars

Dimensions: 13.5"H x 12"W x 5"D

Ordering Information

Part Number: CC-8521BN

Description: Crypto-Lock single door access control system including control unit with mounting bars, weather-proof 10-button keypad in stainless steel spy-proof housing with visitor button and 20 ft. cable. Supplied with instruction manual and mounting hardware.

Options and Accessories

CC-BATT 12Vdc rechargeable battery (two required)

CC-BRUTE Heavy-duty surface mount electric lock

